



# JH | PRO MUSIC SERIES

CUSTOM IN-EAR MONITOR **OWNER'S MANUAL**



JHAUDIO™

Hear no evil.™



# JH | PRO MUSIC SERIES

CUSTOM IN-EAR MONITOR **OWNER'S MANUAL**

Hearing protection and conservation

PAGE 5

Cable management

PAGE 11

Inserting the earpieces

PAGE 7

Detachable cable

PAGE 11

Removing the earpieces

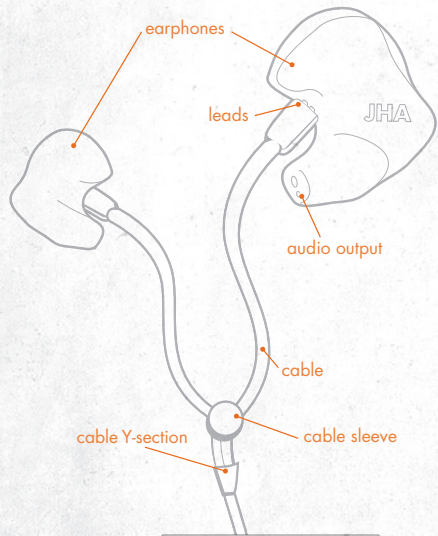
PAGE 10

Limited warranty

PAGE 12

Care and maintenance

PAGE 10



**First off**, congrats on making the extremely wise decision to purchase your JH Pro Series Custom In-Ear Monitor (IEM). We hope it will give you years and years of enjoyment. In fact, we know it will.

We realize it's a bit unnecessary to provide this instruction book. After all, you're a musician—If you can navigate the 14 gazillion gain knobs on a modern half-stack, you probably know how "volume control" works.

That said, your JH Pro IEM is a precision instrument, and to get the very most out of it, it's in your best interest to read through this manual in its entirety. Like a lovestruck groupie, it won't take much to have this thing fulfilling some pretty sweet fantasies\*. All you have to do is push a few buttons, and we promise the music will do the rest.

So read on, live loud, and enjoy your new JH Pro IEM.

- The JHA team

*\*See warnings regarding liquid immersion first.*

## ⚠ WARNING

**HEY YOU! Make sure to read all warnings and instructions before using your JH Pro Series IEM.**

Obviously, it'd be great if we could just have the one warning—"Show a little common sense here, people"—but there are some litigious folks out there who apparently can't drink a glass of water without setting their house on fire. That said:

- The JH Pro IEM is pretty much the end all, be all of pro audio monitors, but remember: **Using any earpiece at high volume can permanently damage your hearing.** Ringing in your ears or any other discomfort may indicate that IEM volume is set too high. The same goes for numb, bleeding ears typically associated with listening to bands with multiple pedal steel players.
- **ALWAYS turn the volume down on your IEM before inserting the earpieces.** Once both earpieces are in place, gradually increase the volume to a moderate level. You know that screeching racket amps make when you accidentally unjack a guitar before cutting the juice down? Imagine that *inside your skull.*

- **If you experience any discomfort or difficulty inserting the earpieces, remove them IMMEDIATELY.** Your ears are sensitive, and you should never force anything into the ear canal—no matter *how much* your buddies at the bar are offering you.
- **Consult an audiologist or physician if you develop hearing problems, excessive wax build-up or any discomfort after use.** Consult a psychiatrist if you have an unusual fear of furry, white objects.
- **Do not submerge your IEM or expose it to water.** This will probably not come as news to you, but electronics + liquids = BAD. Beer included.
- **Do not eat your IEM.** If we had to mention the last one, we probably need to mention this one. Your JH Pro IEM is many things—“delicious” is not one of them.
- Your IEM is one-of-a-kind—custom-molded to fit *your* ears. **Please do not share earpieces with other people.** Putting aside the fact it probably won't fit them comfortably, there are all sorts of earwax-swapping issues we don't even want to go into.

## HEARING PROTECTION AND CONSERVATION

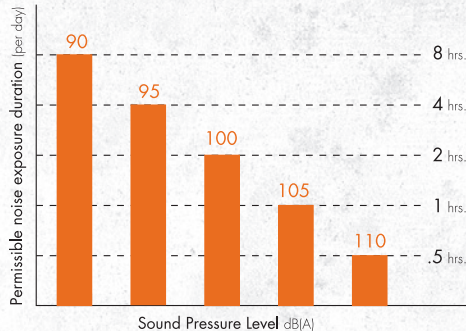
We here at Jerry Harvey Audio are committed to your ears—not just to protecting them, but babying them, indulging them. If your ears were children, they'd be our spoiled grandkids.

Your JH Pro Series IEM was designed to deliver focused monitor audio for crystal-clear playback in noisy stage and studio environments. **Used properly, the JH Pro Series IEM can protect your hearing by lowering destructive ambient sounds and allowing you to listen at significantly lower Sound Pressure Levels.**

That said, **be aware of the effects of excessively loud volume on the ears.** Hearing health is critical to your enjoyment and quality of life. You don't want to be the guy going, "HUH?! WHAT?!" at fancy dinner parties. Believe us, no one likes that guy (*Mick Jagger excluded*).

**Help us protect your hearing by using your JH Pro Series IEM in a responsible manner.**

OSHA (Occupational Safety Health Administration 29CFR1910.95) has developed a series of guidelines for the length of time one can normally be exposed to specific Sound Pressure Levels before hearing damage occurs:



*To avoid hearing damage, you should not be exposed to Sound Pressure Levels above 115 dB(A). For more information visit the OSHA website at [www.osha.gov](http://www.osha.gov).*

Do yourself a favor, and listen responsibly. OK, end of lecture.  
**Let's rock!**



## INSERTING THE EARPIECES

Your JH Pro Series IEM was handcrafted to fit snugly and comfortably in your ears—like a hug with sound. To maximize your comfort and to optimize your listening experience, it's important to insert the earpieces properly. **Don't just cram 'em in!** A good seal will help eliminate background noise and deliver the best frequency response. A great seal will balance a ball on its nose.

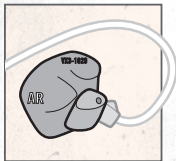
STEP 1



**Turn the output volume all the way down on the device you'll be listening to through the JH Pro IEM.**

We've said it before, but it's important: ALWAYS decrease volume BEFORE listening to any audio source. Especially if it's your mother-in-law.

## STEP 2



Your JH Pro IEM is marked with **blue lettering to indicate the left earpiece and red lettering to indicate the right earpiece.**

Take a moment to let this barrage of information wash over you. Then grab whichever earpiece you feel most attached to and hold it with the model number facing up, so our spy satellites can read it.

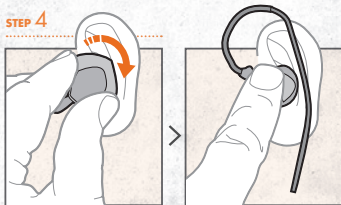
## STEP 3



**Roll the earpiece forward by about a quarter turn, and carefully slide the sound bore into your ear canal.**

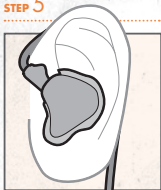
We could make a pun about how we hope this isn't *boring* you, but we haven't had our coffee yet.

## STEP 4



**Gently roll the earpiece backwards to create a comfortable seal with your ear.** Push the top of the earpiece under the helix lock to secure it into place. Do you know what a "helix lock" is? Yeah, us neither. Push the top of the earpiece under the upper rim of your ear instead.

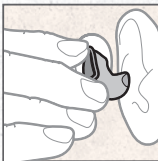
**STEP 5**



**Route the cable over and behind your ear to secure the monitor.**

You can run the cable down your back to conceal it, or let it hang down the front of your chest so everyone can see that you have a JH Pro IEM and are thus cooler than they. Your call.

**STEP 6**



**Repeat steps 2 through 5 with the other earpiece.** We hope you're keeping up.

**STEP 7**



**Turn on your audio source and increase volume to a comfortable level.** Touch your ear and shout, "blue team go" in your best Jack Bauer voice. Trust us, it's awesome.



## REMOVING THE EARPIECES

Today on “Sesame Street:” Do you know what *opposites* are? Up is the *opposite* of down. Black is the *opposite* of white. Cat Stevens covers are the opposite of fun (j/k, Cat).

**To remove the earpieces, do the opposite of what you did to insert them.** Pull the top of each earpiece out from under the upper rim of your ears. Then, rock the earpieces slightly forward, gently loosening the seal, and slide them out from your ear canals. **NEVER yank the earpieces out by their cords**—we don’t care how much of a hurry you’re in, or how bad you have to pee.



## CARE AND MAINTENANCE

- **Use a moistened antiseptic wipe to clean the earpieces after each use.** If it was a really good show, save an extra wipe for the brunette in the front row.
- Just like vampires and bass players, **avoid exposing your JH Pro IEM to water, extreme temperatures, high humidity or prolonged exposure to ultraviolet light.**
- **Baby your JH Pro IEM.** Dropping or striking the earpieces may damage components or compromise sound. If you really need to blow off steam that badly, try yoga.
- **Do not pull on cables to remove the earpieces from your ears or audio source.** It’s the fastest way to turn your JH Pro IEM into a really pricey set of earplugs.

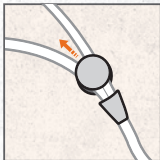


## CABLE MANAGEMENT

**Your JH Pro Series IEM is lightweight and flexible. As such, it can be prone to tangling.** Bounce & Body Conditioner will do nothing to resolve this. Therefore, to ensure years of trouble-free use, proper cable management is essential.

After removing the earpieces, pull the plastic connector sleeve up from the Y-section to bring both earpieces together. Coil the cord so it will fit in the cutout of the provided carrying case. Always store your JH Pro IEM by itself in the supplied carrying case when not in use, just like you do with all 15 of your effects pedals... right?

SLEEVE AND Y-SECTION



## DETACHABLE CABLE

**Your JH Pro Series IEM has been designed with a cable that can be replaced in the field.** “In the field” makes it sound like you’re in the midst of a war zone; feel free to yell “MEDIC!” or “COVERING FIRE!” while you’re doing this. Use discretion when playing particularly seedy venues.

To replace the cable, carefully unplug the cord from the base of each earphone. Pull straight outward when disconnecting the cable to avoid bending the leads. Insert the new cord by plugging the leads into the appropriate earpiece. The red and blue lettering face up on the earphone connectors—red indicating right, blue meaning left.

***All right, that's it—now, get out there and melt some faces!***



## LIMITED WARRANTY JH AUDIO PRO SERIES CUSTOM IN-EAR MONITOR

JH Audio provides a limited warranty against poor-fitting JH Pro IEMs for a period of 30 days from the original shipping date. Material defects or workmanship issues in either the external shell or internal components are covered for a period of two years from the original shipping date. Damage or breakage due to use contrary to JH Audio instruction, ordinary wear and tear, misuse, abuse, negligence, accident, unauthorized repair, acts of God (including locusts), or modification of any part of the product is NOT covered by the warranty. The supplied cord is not covered by the warranty.

JH Pro Series IEMs can be repaired if necessary. Repair estimates are available upon request. If your JH Pro Series IEM needs warranty service or repair, contact customer service at **866-485-9111**. Please return product in original packaging or a similarly protective package.

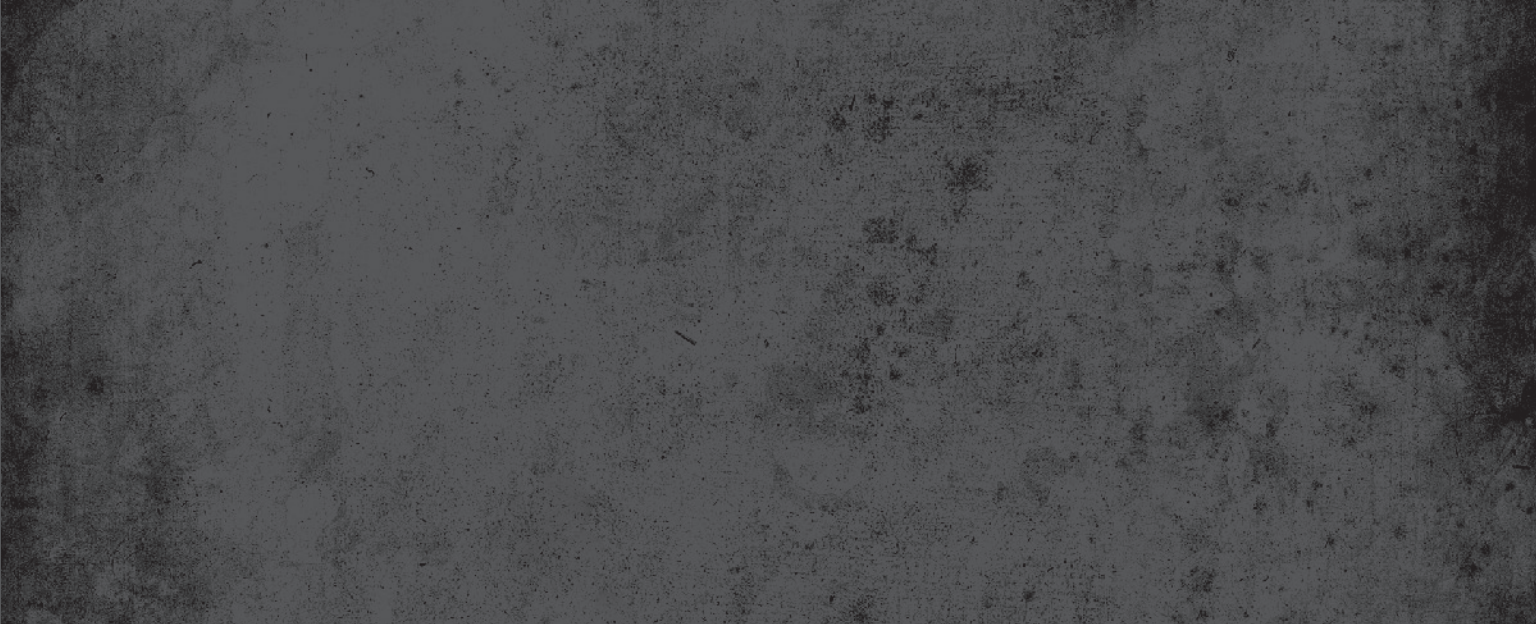
Ship product, prepaid and insured, to:  
Attn: Lab  
2517 East Semoran Blvd.  
Apopka, FL 32703

Please provide a detailed description regarding the problem you're experiencing with the product. Also, please provide contact information and return shipping details. Warranty repairs will be returned to you at no charge via ground transportation.

REPAIR OR REPLACEMENT AS PROVIDED UNDER THIS WARRANTY IS THE EXCLUSIVE REMEDY OF THE CONSUMER. JERRY HARVEY AUDIO SHALL NOT BE LIABLE FOR ANY INCIDENTAL, SPECIAL OR CONSEQUENTIAL DAMAGES, FOR BREACH OF ANY EXPRESSED OR IMPLIED WARRANTY ON THIS PRODUCT, OR RESULTING FROM THE USE OR UNAVAILABILITY OF THIS PRODUCT, EXCEPT TO THE EXTENT PROHIBITED BY APPLICABLE LAW. ANY IMPLIED WARRANTY OF MERCHANTABILITY OR FITNESS FOR A PARTICULAR PURPOSE ON THIS PRODUCT IS HEREBY DISCLAIMED. THIS WARRANTY SUPERCEDES ALL OTHER WARRANTIES ASSOCIATED OR INCLUDED WITH THIS PRODUCT.

Some states do not allow the exclusion or limitation of incidental or consequential damages, or allow limitations on how long an implied warranty lasts, so the above limitation may not apply to you. This warranty gives you specific rights, and you may have other rights that vary from state to state.

© 2011 Jerry Harvey Audio, LLC





**JHAUDIO™**

2515 East Semoran Blvd. / Apopka, FL 32703

[www.jhaudio.com](http://www.jhaudio.com) / p. 866-485-9111 / f. 407-814-0018

© 2011 Jerry Harvey Audio, LLC

4/11